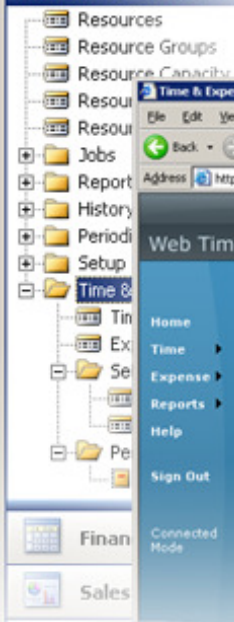




Resource Planning



Features of the Time and Expense entry for Navision module

- **Simple and user friendly user interfaces.**
- **Disconnected Web, Pocket PC and Windows user interfaces.**
Allow installation of the clients on remote disconnected servers. The clients don't depend on the availability of the Navision service. This greatly eliminates bottlenecks when a large number of users are using the application.
- **Can run on Native or SQL options for Navision.**
No need to buy additional servers or software components. Can run on any installation of Navision version 2.6 and up.
- **Fields can lookup existing data from Navision tables.**
Looking up data from the database allows for easier data entry and a minimized risk of user error.
- **Additional fields can be added by the end user.**
Custom field places are provided so the user can pick what fields to use from Navision for the Time and Expense entries. Those fields are editable through the Web client and work the same way as the existing fields.
- **Navision part completely customizable.**
The Navision developers can customize the Navision functionality without limitation.
- **User entries saved in history databases.**
The users can review or restore sent entries from a history database stored locally on the clients.
- **Applications built using the latest .NET 2.0 platform technologies.**



Abcosoft Systems Inc.

**390 Cayer, Laval
Québec
H7L 6E2**

Phone : 1 (514) 448-0595
Fax : 1 (514) 996-0112

Web : www.abcosoft.com
Email : info@abcosoft.com